

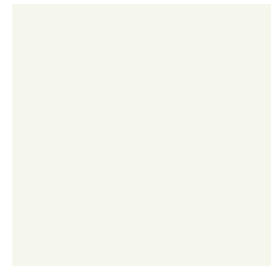
POVRŠINSKA OBRADA / MATERIAL FINISH / MATERIALOBERFLÄCHE / FINITION



RAL 9005

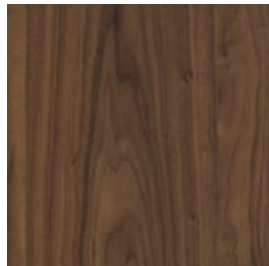


RAL 7016



RAL 9010

teksturirana mat plastifikacija metala /
textured matt powder coated metal /
strukturierte matte Metallplastifizierung /
métal enduit de poudre texturé

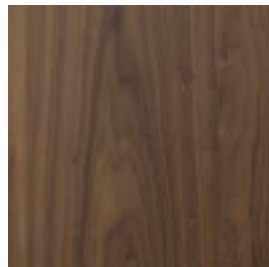


OILED AM. WALNUT

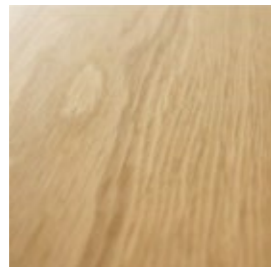


OILED OAK

puno drvo /
solid wood /
Massivholz /
bois massif



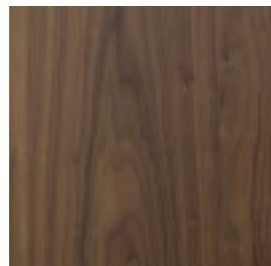
SOFT TOUCH LACQ. AM. WALNUT



SOFT TOUCH LACQ. OAK



BLACK STAINED OAK



SOFT TOUCH LACQ. AM. WALNUT



SOFT TOUCH LACQUERED

furnir /
veneer /
Furnier /
placage

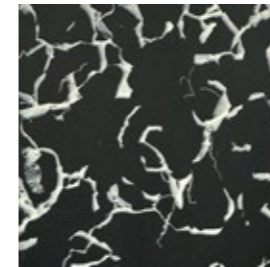


PRADO AGATE GREY

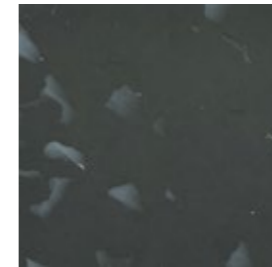


PRADO ALU GREY

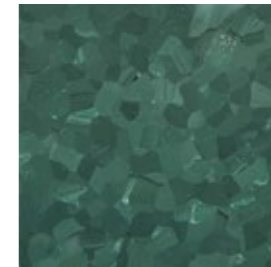
kompakt/
compact /
kompakt /
compact /



SEA FOAM DARK

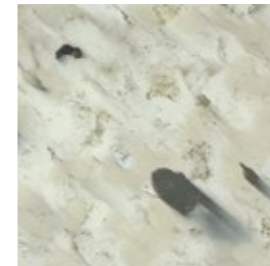


GHOST



EMERALD GHOST

Polygood plastične ploče izrađene od
recikliranih polimera stirena /
Polygood plastic panels made from recycled
styrene polymers /
Polygood-Kunststoffplatten aus recycelten
Styrolpolymeren /
Panneaux en plastique Polygood fabriqués à
partir de polymères de styrène recyclés



TERRAZZO NUOVO

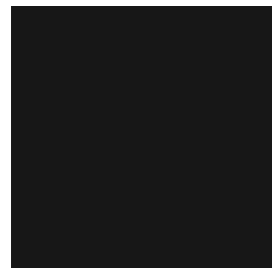


GREYCIOUS



PURE GREY

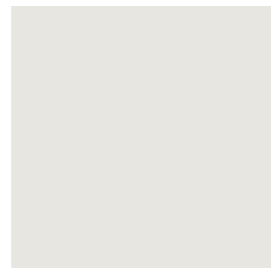
BOJA KOLEKCIJA MDF / COLOR COLLECTION MDF / FARBSAMMLUNG MDF /
COLLECTION DE COULEURS MDF



NCS S 9000-N



NCS S 8500-N

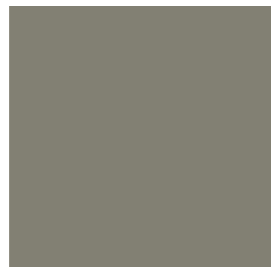


NCS S 0500-N

neutralna /
neutral /
neutral /
neutre



NCS S 8505-G80Y



NCS S 5005-G80Y



NCS S 2005-G80Y

sivo zelena /
gray green /
grau grün /
gris vert



NCS S 5540-G50Y

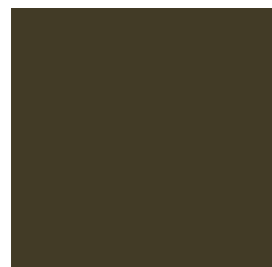


NCS S 3030-G50Y



NCS S 1515-G40Y

zelena /
green /
grün /
vert



NCS S 8010-G90Y



NCS S 4010-G90Y



NCS S 2010-G90Y

zeleno žuta /
green yellow /
grün gelb /
vert jaune



NCS S 7020-Y70R



NCS S 4020-Y70R



NCS S 2005-Y60R

smeđe crvena /
brown red /
rotbraun /
marron rouge



NCS S 3060-Y80R



NCS S 2030-Y90R



NCS S 0507-R

crvena /
red /
rot /
rouge



NCS S 5040-B10G



NCS S 4020-B10G



NCS S 1515-R90B

plava /
blue /
blau /
bleu

TKANINE I KOŽA / FABRIC AND LEATHER / STOFFE UND LEDER / TISSUS ET CUIR

KATEGORIJA A / CATEGORY A / KATEGORIE A / CATÉGORIE A



LEAD - IF058



TUSCANY - IF241



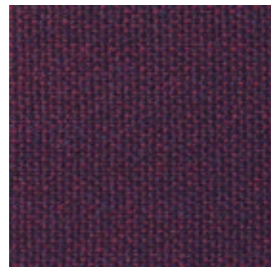
WEDGWOOD - IF027

Main line plus:

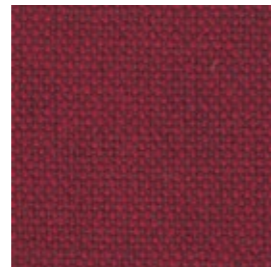
67% vuna, 20% vatroporna viskoza,
13% viskoza /
67% wool, 20% fireproof viscose,
13% viscose /
67% Wolle, 20% feuerfeste Viskose,
13% Viskose /
67% laine, 20% viscose ininflammable,
13% viscose



GIRDER - IF276



WINE - IF019



MATADOR - IF272



ARITHMETIC - AK018



NUMBER - AK020



VALUE - AK006

X2:

100% reciklirani FR poliester B1 /
100% recycled FR polyester B1 /
100% recyceltes FR-Polyester B1 /
100% polyester FR recyclé B1



EQUATION - AK004



PERCENTAGE - AK016

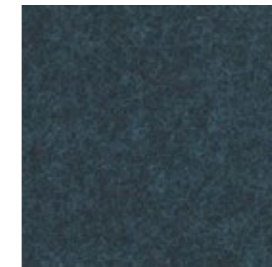


MULTIPLY - AK014

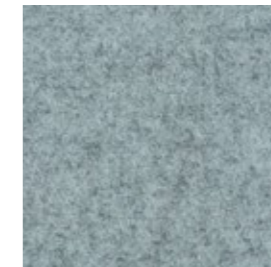
KATEGORIJA B / CATEGORY B / KATEGORIE B / C B



SILCOATES - CUZ30



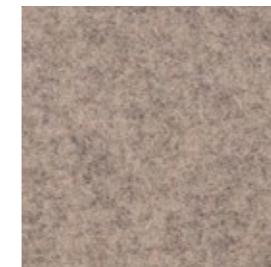
GLENALMOND - CUZ62



PLYMOUTH - CUZ1R

Blazer:

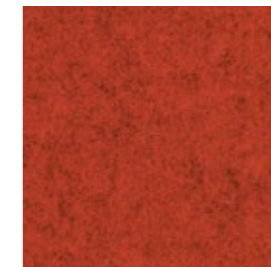
100% vuna /
100% wool /
100% Wolle /
100% laine



ST ANDREWS - CUZ86

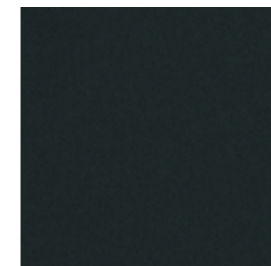


DUNHURST - CUZ58

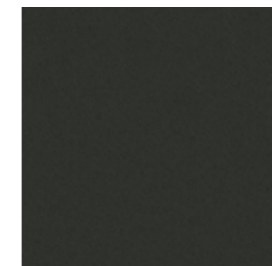


EDGE HILL - CUZ90

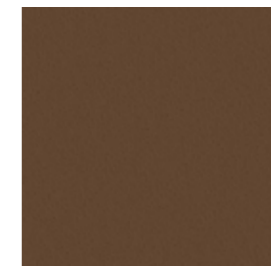
KATEGORIJA C / CATEGORY C / KATEGORI C / CATÉGORIE C



TOUCH 622002



TOUCH 611174



TOUCH 608124

Touch:

100% koža /
100% leather /
100% Leder /
100% cuir